

General Specifications

RYO Relay Output Card

JUXTA

This unit receives status output signal of DCS status card through relay and outputs status card signal and electrically isolated contact signal to the field.

One unit stores 2 channels.

- There are 2 output contacts

Output-1 : Non-voltage contact output (a and b contacts can be switched by jumper) or voltage contact output

Output-2 : Non-voltage contact output (transfer contact, current capacity 3A)

- Furnished with test switch convenient for debugging of DCS or checking operation and LED for status display.

Specifications	
Structure	Nest storing type, connector connection structure card type, front by terminal and rear by connector connections. Terminal cover furnished.
Isolation	Between input power supply~Output-1~Output-2~power supply for voltage contact~alarm terminal
Power fuse	1.0A fuse installed in when Output-1 and voltage contact
Alarm	Non-voltage contact output from alarm terminal when power fuse break
Test switch	AUT : Output contact ON/OFF by external contact input OFF : Output contact compulsorily OFF (when a contact) ON : Output contact compulsorily ON (when a contact)
LED display	Light on (orange) when relay magnetized
I/O Specifications	
Input signal	Non-voltage contact or open collector External contact specs : 24V DC, more than 30mA Relay contact : 2 points
Output signal	Contact rating Output-1 : ① When non-voltage contact Resistance load 250V AC 3.0A, 30V DC 3.0A, 125V DC 0.2A Inductance load 250V AC 1.5A, 30V DC 1.5A, 125V DC 0.1A Max. voltage use 250V AC/125V DC ② When voltage contact Resistance load 125V AC 0.6A, 30V DC 0.6A, 125V DC 0.1A Max. voltage use 125V AC/125V DC Output-2 : Resistance load 250V AC 3.0A, 30V DC 3.0A, 125V DC 0.2A Inductance load 250V AC 1.5A, 30V DC 1.5A, 125V DC 0.1A Max. voltage use 250V AC/125V DC Relay contact protection : When driving inductance load, erase noise to protect contact
Standard Performance	
Insulation resistance	100MΩ(500V DC) between input power supply~Output-1~Output-2~power supply for voltage contact~alarm contact output
Voltage withstand	(RYO-1□) 1500V AC/1 minute between input power supply~Output-1~Output-2 (RYO-2□) 1500V AC/1 minute between input power supply~Output-1~alarm contact output~Output-2 500V AC/1 minute between Output-1~alarm contact output
Ambient temperature & humidity	Normal operating condition : 0~50°C, 5~90%RH Operating limit : -10~60°C, 5~95%RH Storing condition : -40~70°C, 5~95%RH (no condensation)
Power voltage	24V DC±10% (ripple content below 10%p-p)
Current dissipation	24V DC 60mA
Mounting, Shape & Accessories	
Mounting method	Store in exclusive nest (RYH or RYV)
Connection method	Input : Connector connection Output-1, Output-2 : M3.5 screw terminal connection Alarm terminal : Connector connection 24V relay power supply : Connector connection Power supply for voltage contact : Connector connection
Material of terminal screw	Nickel plated iron (tightening torque : less than 8 kgf·cm)
External dimension	108(H)x21.4(W)x129.5(D)mm
Weight	About 150g
Accessories	Tag number label 1

RYO-□ □

Type

Relay output card (2 channel use)
Input signal : Non-voltage contact or open collector

Relay Output Type

1 : Output-1 a contact or b contact (non-voltage contact) jumper switching
Output-2 Transfer contact

2 : Output-1 a contact (voltage contact with fuse)
Output-2 Transfer contact

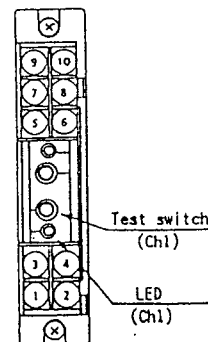
Test Switch

0 : No test switch
1 : With test switch (AUT-OFF-ON)
2 : With test switch (OFF-AUT-ON)
Can designate when RYO-1 only.

ORDERING INFORMATION
(Example) Type Code : RYO-11

Terminal Arrangement

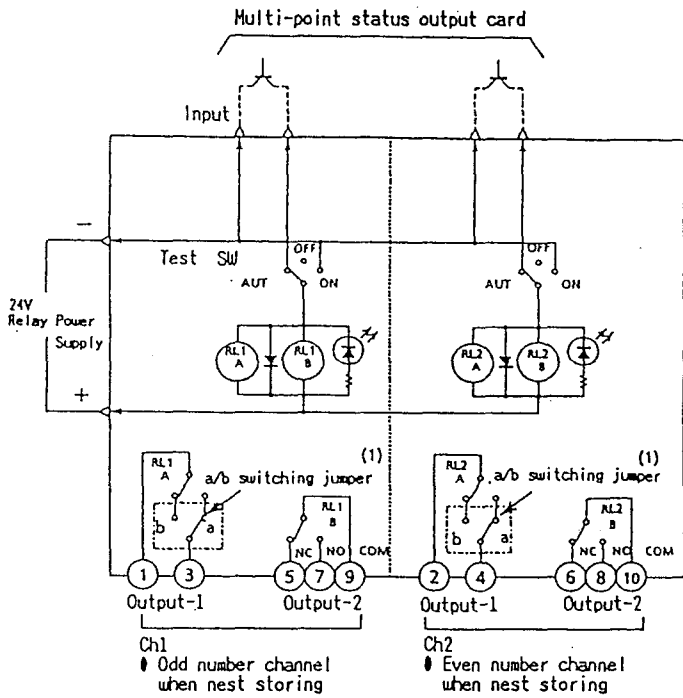
Terminal No.	Signal	
	RYO-1□	RYO-2□
1	Common (non-voltage)	a contact N (-) (w/voltage)
3	a or b contact (non-voltage)	a contact L (+) (w/voltage)
5	b contact output	
7	a contact output	
9	Common	
2	Common (non-voltage)	a contact N (-) (w/voltage)
4	a or b contact (non-voltage)	a contact L (+) (w/voltage)
6	b contact output	
8	a contact output	
10	Common	



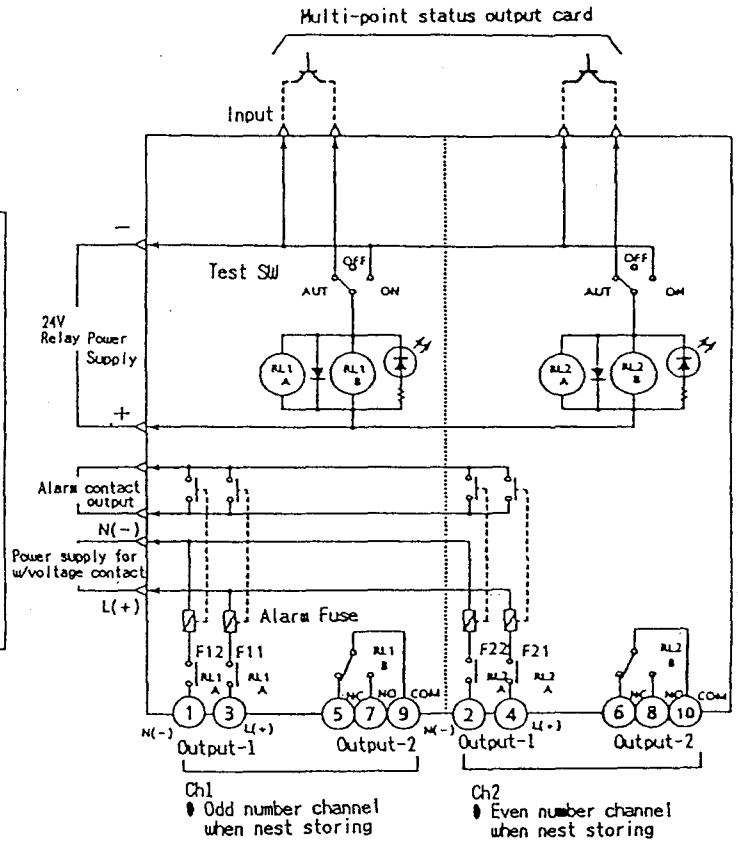
Block Diagram

● RY0-1□ (Output-1 : Non-voltage contact output)

● RY0-2□ (Output-1 : voltage contact output)



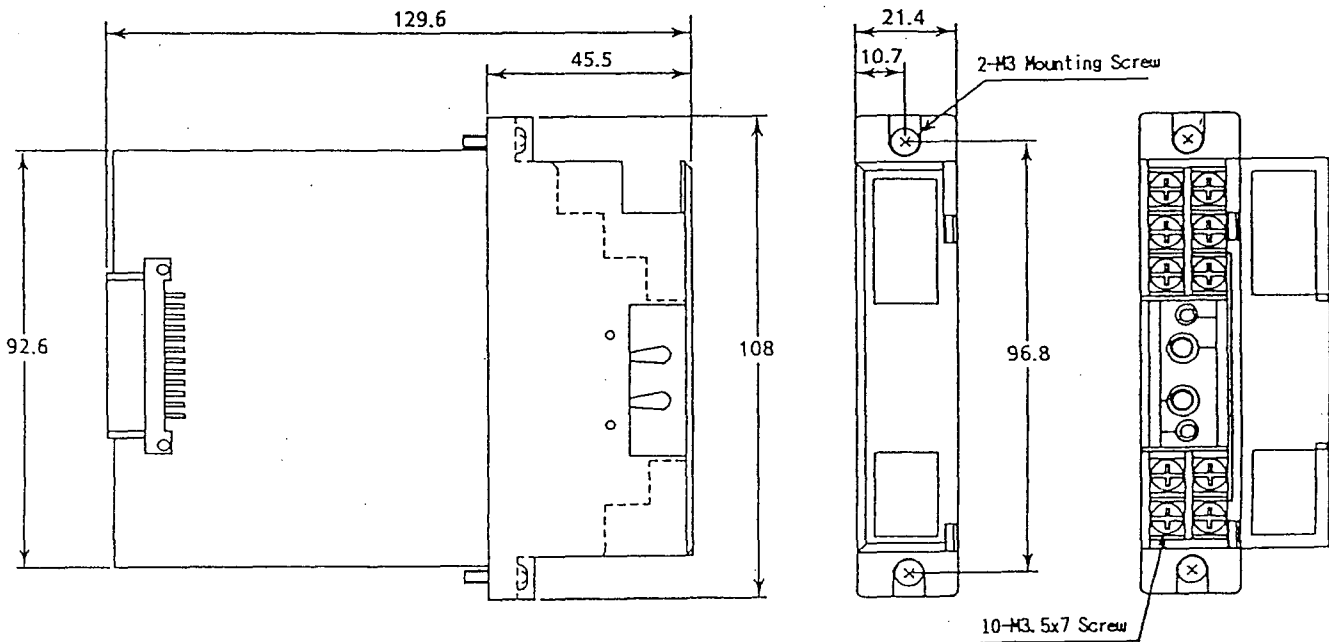
(1) When shipment from factory, Output-1 a/b switching jumper is in a contact status.



Ch1 ● Odd number channel when nest storing
Ch2 ● Even number channel when nest storing

External Dimension

Unit : mm



Subject to change without notice for grade up quality and performance